

KFXDN

ASSEMBLY KITS FOR BENDING BEAM LOAD CELLS



Assembly kits for FXC and FXD series bending beam cells: stainless steel accessories designed for weighing hoppers, tanks, and mixers with small or medium size. Design to ensure the correct functioning of the load cell.

Working in cooperation with:

VAHY PRO S.R.O.

FUGNEROVA 345 - 40004 - TRMICE
Tel. 0042-0475620800 Fax. 0042-0475620800
vahypro@vahypro.cz

The best solution
for advanced industrial
applications

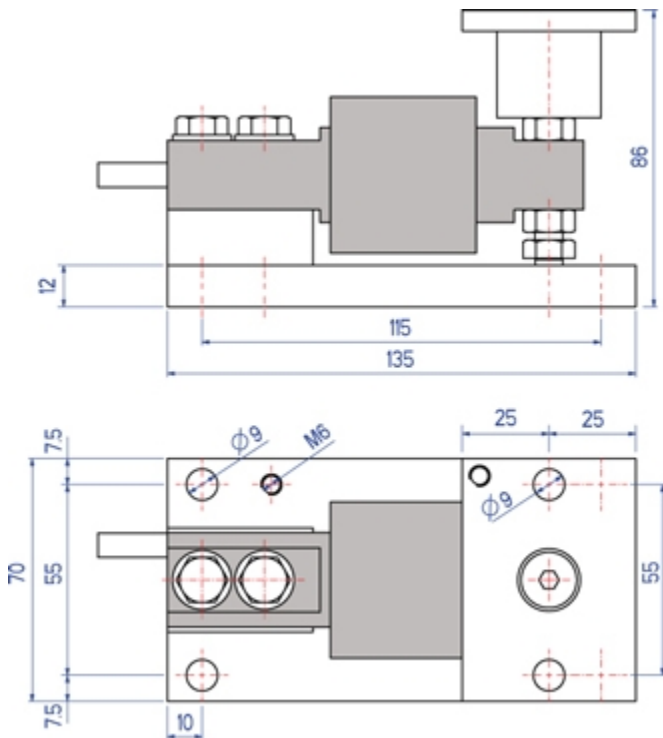
MAIN FEATURES

- EXECUTION IN STAINLESS STEEL
- SAFETY LOCK FOR THE TRANSPORT
- FITTED WITH AN ARTICULATED JOINT FOR THE VIBRATION ABSORPTION AND THE EXPANSIONS COMPENSATION

⚠ ATTENTION ⚠

- The KFXDN kit is designed for allowing the correct functioning of the cells and for obtaining the requested weighing accuracy, but does not give protection to the cell and neither to the structure.
- The system designer and installer is obliged to search for the best solutions against lateral forces, capsizing, and overload taking into consideration the:
 - knocks and vibrations;
 - wind shear;
 - seismic classification of the installation area;
 - support base consistence.

DETAIL 1



Dimensions in mm



www.diniargeo.com



“YOUR WORLDWIDE PARTNER FOR WEIGHING,”

DINI ARGEO
FRANCE sarl
Nogent-sur-Marne

DINI ARGEO
GMBH
Sinsheim - Germany

DINI ARGEO
UK Ltd
Taunton - United Kingdom

DINI ARGEO WEIGHING
INSTRUMENTS Ltd
Shanghai - China

DINI ARGEO
WEIGHBRIDGES
Calto (RO) – Italy



HEAD OFFICE
Via Della Fisica, 20
41042 Spezzano di Fiorano Modena - Italy



VAHY PRO S.R.O.

FUGNEROVA 345 - 40004 - TRMICE

Tel. 0042-0475620800 Fax. 0042-0475620800

vahypro@vahypro.cz

SALES AND TECHNICAL ASSISTANCE SERVICE