

FXC

FXC SERIES BENDING BEAM LOAD CELLS



Bending beam load cells for approved weighing, automatic systems, dosage.

CAPACITIES (kg): 10, 20, 50, 100, 200, 300, 500.

Stainless steel. IP68 protection. C3 precision class.

Working in cooperation with:

VAHY PRO S.R.O.

FUGNEROVA 345 - 40004 - TRMICE
Tel. 0042-0475620800 Fax. 0042-0475620800
vahypro@vahypro.cz

The best solution
for advanced industrial
applications

MAIN FEATURES

- C3 PRECISION CLASS
- STAINLESS STEEL
- IP68 PROTECTION
- MAX. CAPACITIES FROM 10 TO 500 kg
- SHIELDED CONNECTION CABLE
- OIML CERTIFICATE AVAILABLE UPON REQUEST
- TEST CERTIFICATE AVAILABLE UPON REQUEST

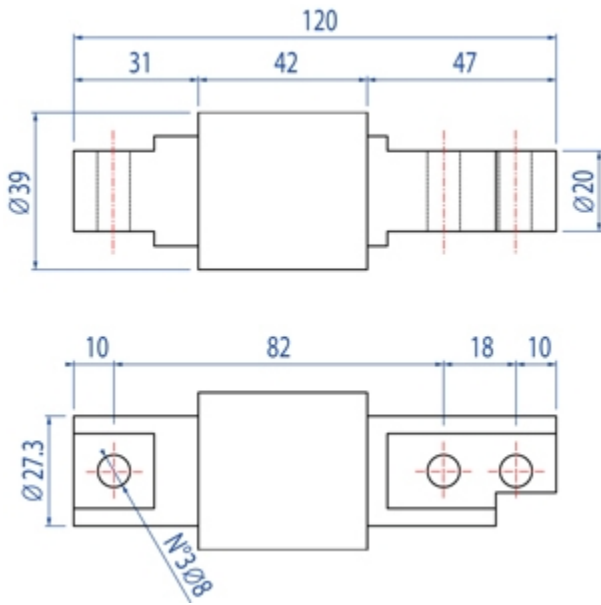
TECHNICAL FEATURES

- Minimum load cell verification interval: $V_{min} = E_{Max} / 10.000$
- Maximum number of verification intervals: $n_{LC} = 3000$
- Full Scale Output: $2mV/V \pm 0,1\%$
- Combined error: 0,017% of Full Scale Output (F.S.)
- Non-Repeatability: 0,015% F.S.
- Temperature effect on zero: $\pm 0,002\% / ^\circ C$
- Temperature effect on full scale output: $\pm 0,0012\% / ^\circ C$
- Compensated Temperature Range: $-10^\circ C / +40^\circ C$
- Operating Temperature Range: $-20^\circ C / +60^\circ C$
- Creep error after 30 minutes $\pm 0,016\%$ F.S.
- Maximum tolerated excitation voltage: 15 VDC
- Input Resistance: $385 \pm 20 \text{ Ohm}$
- Output Resistance: $350 \pm 5 \text{ Ohm}$
- Insulation Resistance: $> 5000 \text{ MOhm}$
- Safe Overload: 200% F.S.
- Ultimate Overload: 300% F.S.
- Nominal displacement: $< 0,4 \text{ mm}$
- 4-wire shielded cable, 3m long, 4mm diameter.

ATEX VERSION

- The CCATEX certificate makes the load cell suitable for use in hazardous areas with protection methods according to:
ATEX II 1G Ex ia IIC T6 (Ta $-20 \div +40^\circ C$) TX (Ta $-20 \div +65^\circ C$) Ga
ATEX II 1D Ex ta IIIC TX $^\circ C$ (Ta $-20 \div +40^\circ C$) TX $^\circ C$ (Ta $-20 \div +65^\circ C$) Da IP65.
The certificate includes the manual and the ATEX CE conformity declaration (available in EN, DE, FR, and IT).
- **IMPORTANT:** the certificate refers to the single load cell. For systems with more load cells, it is necessary to order one certificate for each load cell.

DETAIL 1










Dimensions (mm)

Wiring Code	
<i>Colour</i>	<i>Function</i>
--	SHIELD
BLACK	OUTPUT +
RED	INPUT +
BLUE	OUTPUT -
WHITE	INPUT -

VERSIONS

Models Available

Code	Max (kg)	Masterpack 4 pcs
FXC10 	10	FXC10C
FXC20 	20	FXC20C
FXC50 	50	FXC50C
FXC100 	100	FXC100C
FXC200 	200	FXC200C
FXC300 	300	FXC300C
FXC500 	500	FXC500C



www.diniargeo.com



“YOUR WORLDWIDE PARTNER FOR WEIGHING,”

DINI ARGEO
FRANCE sarl
Nogent-sur-Marne

DINI ARGEO
GMBH
Sinsheim - Germany

DINI ARGEO
UK Ltd
Taunton - United Kingdom

DINI ARGEO WEIGHING
INSTRUMENTS Ltd
Shanghai - China

DINI ARGEO
WEIGHBRIDGES
Calto (RO) – Italy



HEAD OFFICE
Via Della Fisica, 20
41042 Spezzano di Fiorano Modena - Italy



VAHY PRO S.R.O.

FUGNEROVA 345 - 40004 - TRMICE

Tel. 0042-0475620800 Fax. 0042-0475620800

vahypro@vahypro.cz

SALES AND TECHNICAL ASSISTANCE SERVICE